

NOTICE OF COMMENT PERIOD ON COMPLETENESS OF ROUTE PERMIT APPLICATION

Issued: June 7, 2016

In the Matter of the Application of Minnkota Power Cooperative, Inc. for a Route Permit for the MPL-Laporte 115 kV Transmission Line Project in Clearwater and Hubbard Counties, Minnesota

PUC Docket Number/s: ET6/TL-16-327

Comment Period: Initial comment period closes June 24, 2016 at 4:30pm
Reply comment period closes July 1, 2016 at 4:30pm

Comments received after comment period closes may not be considered

Topic/s Open for Comment:

- Does the route permit application contain the information required by Minnesota Rules parts 7850.1900?
- Are there any contested issues of fact with respect to the representations made in the application?
- Should the Commission appoint an advisory task force?

Project Background: On June 2, 2016, Minnkota Power Cooperative filed a route permit application with the Minnesota Public Utilities Commission (Commission) to construct approximately 9.4 miles of new overhead 115 kilovolt (kV) transmission line and an associated substation in Clearwater and Hubbard Counties, Minnesota (Project) to serve an industrial load for a new pumping station to be constructed and operated by Minnesota Pipeline Company, LLC.

Submit Public Comments: Visit mn.gov/puc, select *Speak Up!*, find this docket, and add your comments to the discussion.

- *If you wish to include an exhibit, map or other attachment, please send your comments via U.S. Mail.*

Send U.S. Mail to Public Utilities Commission, 121 7th Place East, Suite 350, St. Paul MN 55101. Please include the Commission's docket number in all communications.

Filing Requirements: Utilities, telecommunications carriers, official parties, and state agencies are **required** to file documents using the Commission's electronic filing system (eFiling). All parties, participants and interested persons are encouraged to use eFiling: mn.gov/puc, select *eFiling*, and follow the prompts.

Project Mailing List: Sign up to receive notices about project milestones and opportunities to participate (meetings, comment periods, etc.).

Contact docketing.puc@state.mn.us or 651-201-2204 with the docket number (*16-327*), your name, mailing address, and email address.

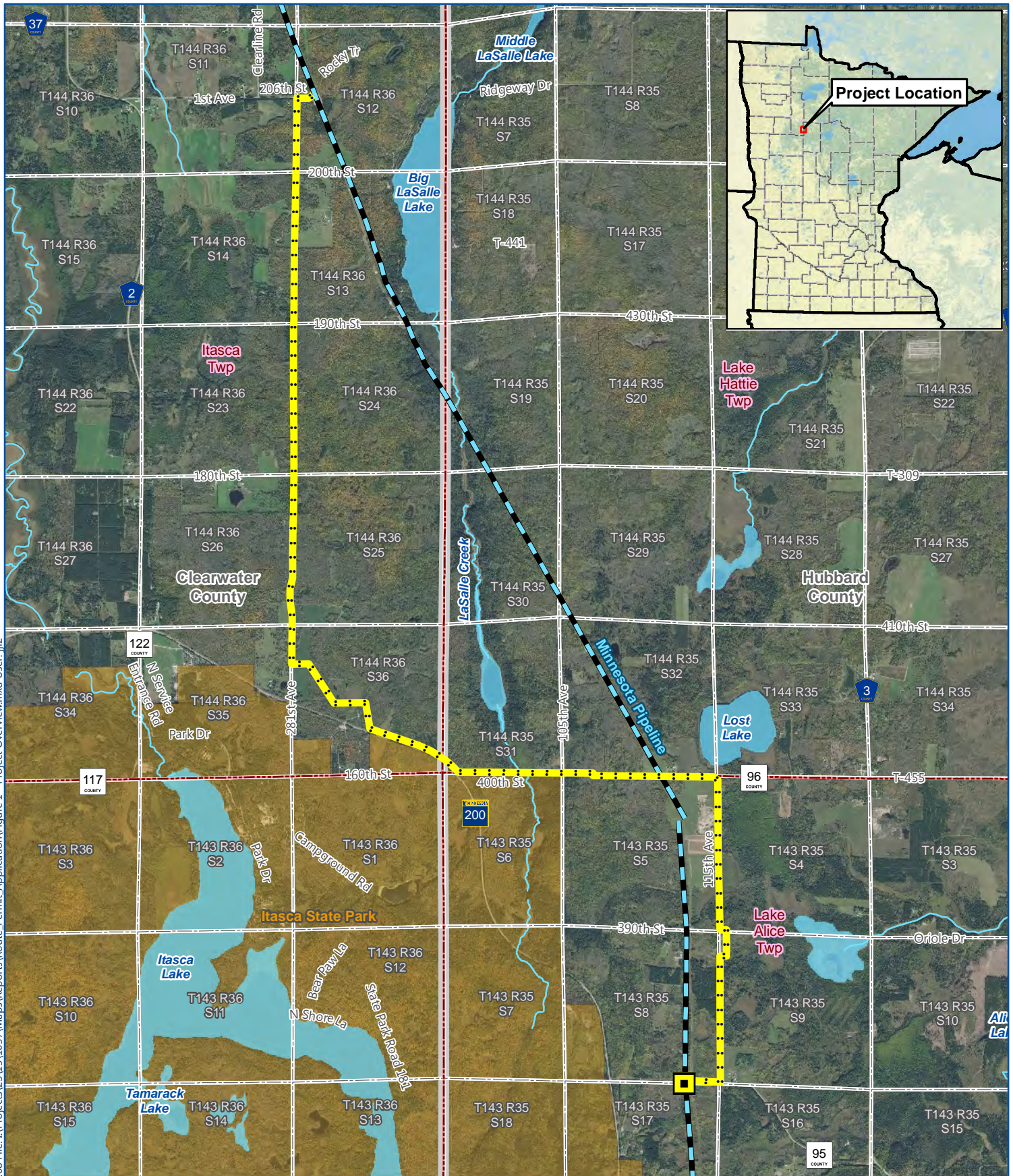
Full Case Record: See all documents filed in this docket via the Commission's website - mn.gov/puc, select *Search eDockets*, enter the year (*16*) and the docket number (*327*), select *Search*.

Subscribe to receive email notification when new documents are filed in this docket at mn.gov/puc, select *Subscribe*, and follow the prompts.

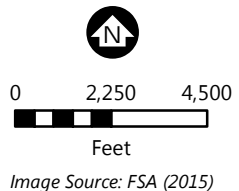
Questions about this docket or Commission process and procedure? Contact Commission staff, Cezar Panait, at Cezar.Panait@state.mn.us or 651-201-2207.

Change your mailing preferences: Email docketing.puc@state.mn.us or call 651-201-2204

This document can be made available in alternative formats (e.g., large print or audio) by calling 651-296-0406 (voice). Persons with hearing loss or speech disabilities may call us through their preferred Telecommunications Relay Service.



- New Substation
- Proposed Route
- Minnesota Pipeline
- PWI Watercourse
- PWI Basin
- Township Boundary
- PLS Section
- County Boundary
- State Park



PROJECT OVERVIEW

MPL - Laporte Project

Minnkota Power Cooperative, Inc.

Clearwater and Hubbard Counties

FIGURE 1